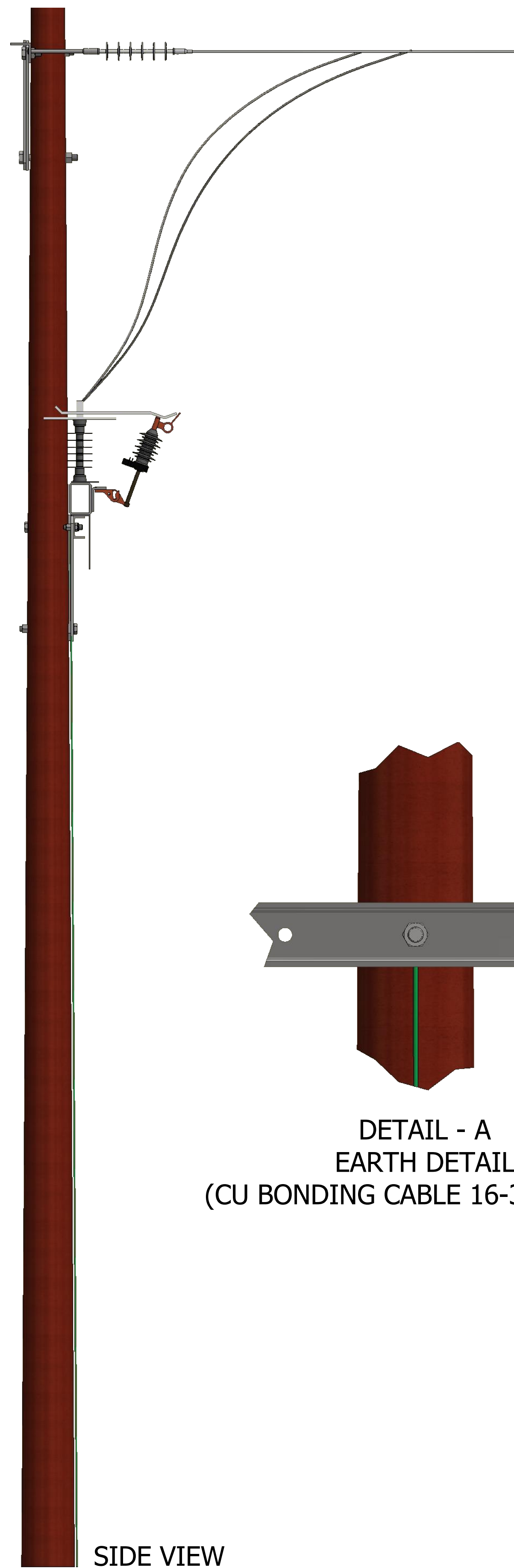
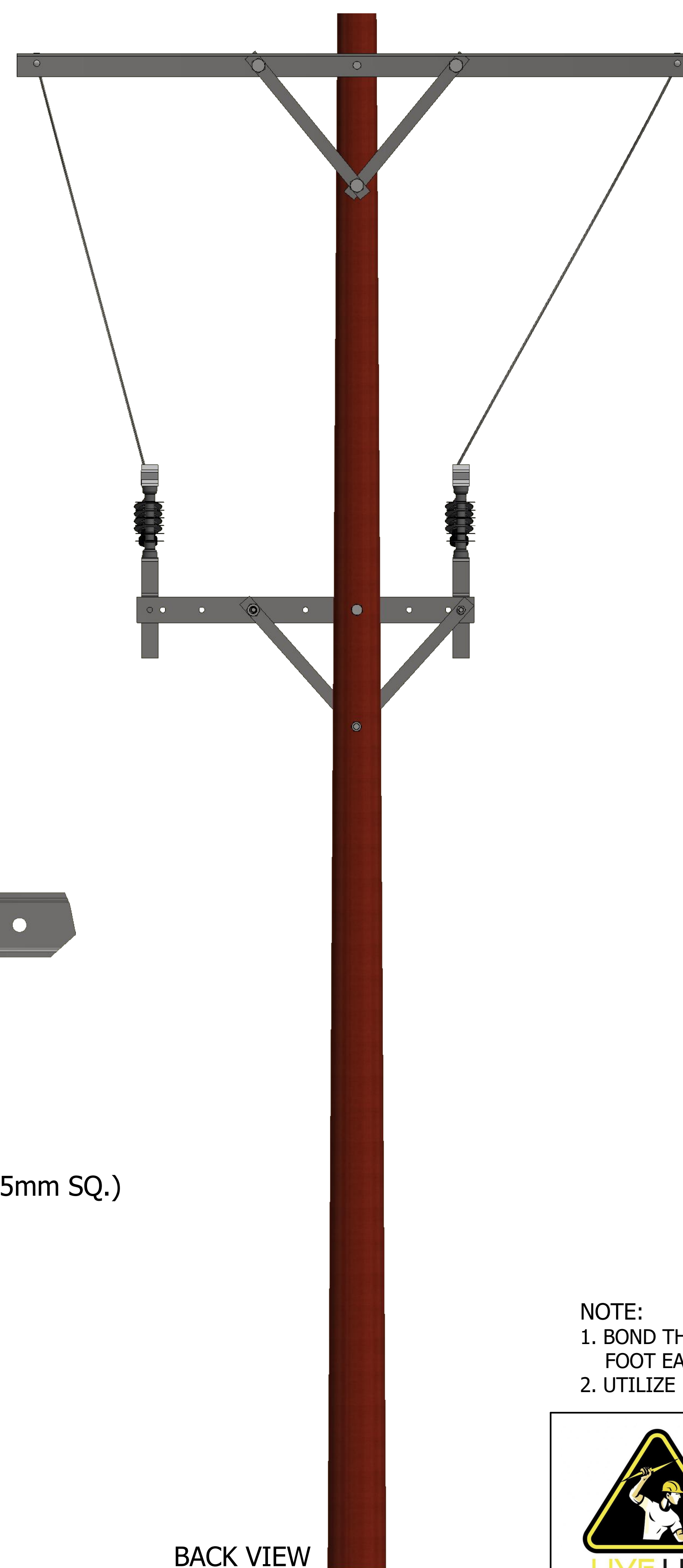


FRONT VIEW

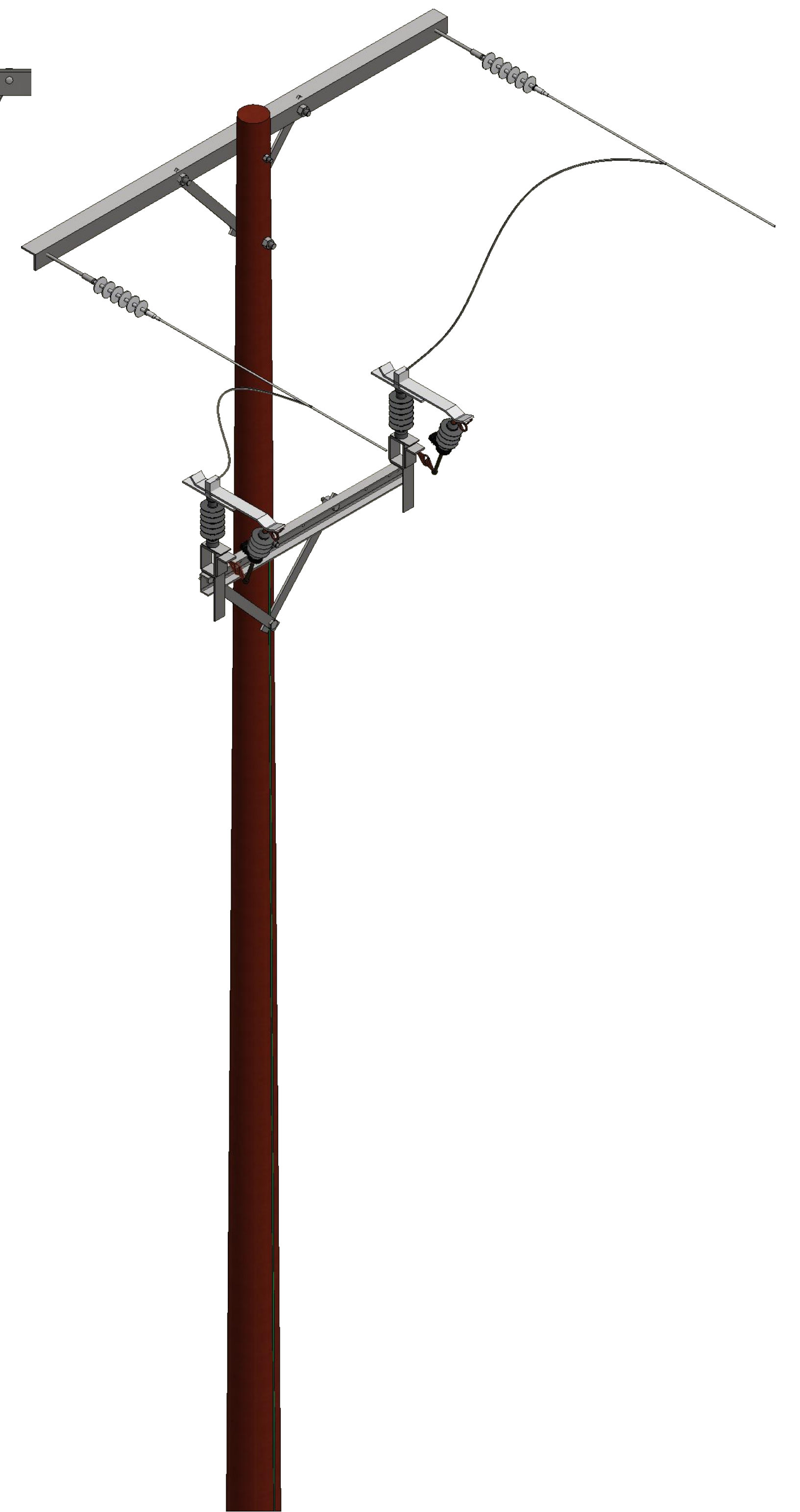


SIDE VIEW

DETAIL - A  
 EARTH DETAIL  
 (CU BONDING CABLE 16-35mm SQ.)



BACK VIEW



- NOTE:
1. BOND THE COPPER CABLE TO THE FIRE WALL AND THE POLE CLAMP TO THE CROW FOOT EARTH.
  2. UTILIZE 16-35 mm COPPER OR EQUIVALENT CABLE TO FORM A CROW FOOT EARTH.



DRAWN K.R	08/02/2021	LIVE LINE TECHNOLOGY www.liveline.co.za	
CHECKED K.R		TITLE	
QA		<b>SINGLE-POLE DROP OUT SURGE ARRESTER INSTALLATION</b>	
MFG		SIZE D	REV
APPROVED KEVIN RASI		DWG NO FIREWALL- 03/21	
Tel: +27184685080		SCALE - 1:1	SHEET 3 OF 3
sales@liveline.co.za			